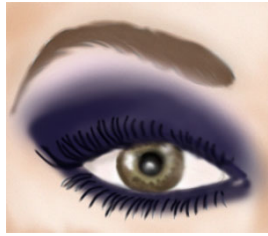


Godwin Colorguard Makeup 2007 Season



This season's eye makeup effect is called...

Smoky Eyes

Smoky eyes are a classic Colorguard makeup look. The secret of this popularity is that smoky eyes can change your face dramatically, transforming the girl-next-door into a stylish diva while emphasizing your facial features and making them seen from the stands (and judges). Once you learn and master these application and blending techniques, the transition will take you only a few minutes.

You will need one eye pencil, two colors of powder eye shadow, and dark mascara to produce a fantastic smoky eyes effect. We will be using the following Mary Kay products for the eyes:

- Storm Eye Color
- **Crystalline** Eye Color
- Black Eye Liner
- Black Waterproof Mascara



This season's lip makeup effect is called...

Bold Lips



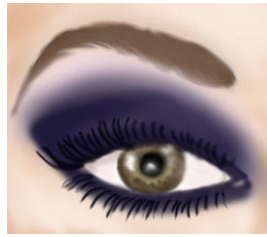
Bold lips are also a classic Colorguard makeup look. The use of bold lipstick color helps to emphasize the shape of your mouth and make them seen from the stands (and judges). The fans (and judges) want to know you are having fun; so let them see you smile! Once you learn and master these application and blending techniques, the transition will take you only a few minutes.

You will need one lipstick color in a bold, darker red color. We will be using the following Mary Kay product for the lips:

- Redwood Lip Color

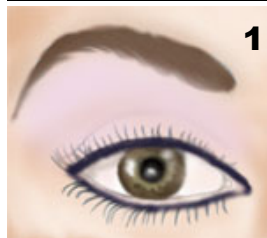
Optional: If you decide to line your lips, please select a Red lip liner.



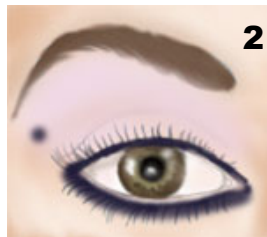


Follow the instructions below to achieve

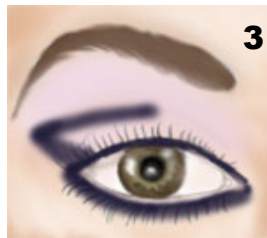
Smoky Eyes



- 1 Step 1:** Outline your eyes with the eye pencil, all the way around. Make the line thicker along the upper lash line. Using a sponge applicator, apply your base eye shadow (the lighter color) all over the upper eyelid. Blend well.



- 2 Step 2:** With the edge of a sponge applicator, lightly sweep across the contouring eye shadow (darker color) and apply along the lower lash line. Blend well with the pencil line. Remember, it is easier to add more eye shadow than to remove too much. Start lightly and add more to increase intensity. Choose the spot where you will start applying contouring eye shadow on the upper lid. Think of the point where your upper and lower eyelids come together, and lift that point halfway to the eyebrows.



- 3 Step 3:** With the edge of a sponge applicator, apply contouring eye shadow in a horizontal "V" shape, starting from the spot defined in the previous step. (See picture at left)



- 4 Step 4:** With the sponge applicator, blend eye shadow in the crease and along the upper lashes towards the inner corners of your eyes. Reapply and blend contouring color in a "V" shape until you reach a desirable saturation.



- 5 Step 5:** Connect your upper and lower lash lines by blending them together.



- 6 Step 6:** Don't forget to enhance your eyebrows to balance strong "smoky eyes" makeup. To complete the look, apply lots of mascara. Your eyes are now smokier than ever before!

Follow the instructions below to achieve

Bold Lips



Step 1: With your mouth slightly open, start color application by defining the cupid bow, moving the lipstick from the center upwards and outwards.



Step 2: Draw upper and lower lips from the corners to the center. In the corners, blend your color into the mouth, keeping it open.



Step 3: Add more lipstick to the lower lip with two long strokes in different directions. If you are not completely satisfied with the accuracy of application, fix any small flaws with a lip pencil.